

RESEARCH AND INNOVATION SUPPORT PROGRAM

INTERNATIONAL COLLABORATIVE RESEARCH PROJECTS

ERA MIN 3 2023

Application Guidelines

**Deadline for submitting requests:
5 p.m. (Brussels time), 11 a.m.(Montreal time), March 30, 2023**



E R A • M I N 3

**RAW MATERIALS FOR THE SUSTAINABLE DEVELOPMENT
AND THE CIRCULAR ECONOMY**

TABLE OF CONTENTS

INTRODUCTION	4
PROGRAM OBJECTIVES	4
ELIGIBLE CLIENTS	5
ELIGIBLE PROJECTS	6
FINANCIAL ARRANGEMENT	9
COMMUNICATION	12
PROJECT SELECTION	12
PROJECT APPROVAL	12
PROJECT TRACKING	12
CONTACT	13
APPENDIX 1- DETAILS ON ELIGIBLE TRAVEL EXPENSES	14
APPENDIX 2 - HYDRO-QUÉBEC	18
APPENDIX 3 - DEFINITION OF DIFFERENT TECHNOLOGY READINESS LEVELS (TRL)	19

Documents required when submitting the application for the preproposal:

- Duly completed PRIMA Quebec application form (signed and dated). Every section in the form must be filled out.
- The project coordinator must submit in the ERA.MIN system the ERA.MIN forms (CV of Key Personnel, Form A - Proposal Technical Description, Form B - Statement of Commitment, Form C - Statement of own funding, Financial Plan, Gantt Chart)
- CV of the project manager and of the researchers and industrialists of the Quebec team part of the ERA MIN 3 consortium if these are not already included in the ERA.MIN form submitted by the project coordinator
- Letters of support signed by the partners (companies and non-profit organizations [NPO] of the financial package) specifying the amounts allocated to the project R&D cost, contribution in kind and PRIMA Quebec management fees.

Please note:

- Funding will only be awarded upon proof of the following:
 - All additional funding (NSERC, NRC-IRAP or others) has been approved (a copy of the approval must be forwarded to PRIMA);
 - The full ERA MIN proposal has been recommended for funding;
 - The other organizations in the ERA MIN consortium have obtained their funding;
 - The various parties have drafted and signed an intellectual property agreement before the first grant payment.
- Once the request for additional funding has been submitted, a copy must be sent to PRIMA Quebec, **confirmation that the additional funding has been obtained must be sent to PRIMA before December 1, 2021.**
- Partners in the consortium's Quebec portion must be members of PRIMA Quebec.

Contacts

For any additional information, or for assistance regarding the application form, please contact Michel Lefèvre at (514) 284-0211, Ext. 227.

The PRIMA pre-proposal form must be sent before **March 30, 2023, at 11 a.m. Montreal time** in a single file in PDF format (Adobe Acrobat) by email to: laura.salatian@prima.ca.

INTRODUCTION

The Quebec government considers innovation as an important driver of economic growth. If Quebec is to maintain its status as an advanced society, exercise influence and open itself up to the world, it must ensure the participation of its researchers and organizations within collaborative industrial research projects that can generate future technologies. The government therefore seeks to encourage international research partnerships.

PSO-International help support the international efforts of Quebec's universities and colleges, along with those of institutional and industrial players working within various research and innovation markets. To this end, the *Ministère de l'Économie, de l'Innovation et de l'Énergie (MEIE)* supports PRIMA Quebec's participation in the ERA MIN 3 call 2021.

The ERA MIN 3 - 2021 call was launched on December 7, 2023. The ERA-MIN3 consortium consists of 23 funding bodies for a total budget of more than 13.6 million Euros.

EU Country/Region

Belgium / Flanders (VLAIO/FIO); Belgium / Flanders (FWO); Belgium / Wallonia (SPW -Research); Bulgaria (BNSF); Czech Republic (TA CR); Estonia (ETAg); Finland (Business Finland); France (ADEME); France (ANR); Germany (JÜLICH); Ireland (GSI); Italy (MUR); Poland (NCBR); Portugal (FCT); Romania (UEFISCDI); Spain (CDTI); Spain / Navarre (CFNA); Spain (AEI); Slovakia (SAS); Slovenia (MIZS); Sweden (Vinnova),

Countries associated with the EU: Turkey (TUBITAK)

Countries outside the EU: Canada-Quebec (PRIMA Quebec) and South Africa (DSI)

PROGRAM OBJECTIVES

General Objective

Support and implement international research and innovation initiatives between universities, colleges, institutions and industries.

Targeted Results

1. Establish partnerships between universities, colleges, institutions and industry, in Quebec, outside Quebec and internationally
2. increased research collaboration between universities and industry, along with greater international, intersectoral and inter-agency collaboration;
3. Greater visibility for Quebec researchers and their institutions at the national and international levels;
4. Greater development for researchers seeking to improve their competitive positioning in Quebec's future markets through R&D projects.

ELIGIBLE CLIENTS

Eligible applicants

Applications must be submitted by Quebec research establishments. Universities, CCTTs or public research centers¹ are eligible (if the research center is not on the list, please contact a PRIMA advisor to verify its status [public or private] with MEIE). They must allow the training of highly qualified personnel (HQP).

Eligible Manufacturers

It is necessary to have at least one company (primarily an SME) with a presence in Quebec (production or R&D). Businesses outside Quebec are not eligible. The participation of partners is the subject of a signed letter of support.

You cannot have related companies in the ERA MIN 3 consortium. Therefore, the subsidiary or the parent company of the Quebec company cannot participate in the project with the international partner.

Hydro-Québec is considered, by default, as a public research center. However, the latter can be considered as an industrialist under certain conditions, see Annex 2 for details.

PRIMA Quebec membership

All industrial organizations, academics or public research centers participating in a project must be members in good standing of PRIMA Quebec at the time of project submission in the full proposal phase and must remain so throughout the duration of the project if it - this is accepted for funding.

To become a member of PRIMA Quebec: <http://www.prima.ca/en/become-member>

0-50 employees	CAD 280,00
51-249 employees	CAD 450,00
250-499 employees	CAD 650,00
500 employees and (+)	CAD 1 000,00
Universities	CAD 2 000,00
CCTT – Public Laboratory	CAD 1 000,00

¹ The list of recognized eligible public research centers is available at the [following link](#).

ELIGIBLE PROJECTS

All research projects with technological maturity levels (TRL 1-9) are eligible. However, agencies from other participating countries may restrict the level of the project's TRL. Please inquire before any project submission.

The projects are in collaboration with partners from the countries participating in the ERA MIN 3 call, there may be partners outside ERA MIN 3 consortium. However, the following conditions must be met:

- A consortium must consist of **at least three eligible project partners seeking funding from participating funding organizations** from at least three different countries, of which at least one is an EU Member State or Associated Country participating in the call.
- Organizations from countries/regions not participating in the call can be consortium partners provided they provide proof of the availability of their own funds to cover the activities of their project.
- There is no limit in the maximum size of the consortium, but it must be adapted to the level and complexity of the project and each partner must make a significant contribution to the transnational added value of the collaboration.
- The total efforts of a country's partners in a proposal cannot exceed 70% of the total project efforts (measured in person-months, PM). The PM per partner must be clearly indicated in the corresponding table of the proposal description (Form A of the ERA.MIN application). For PRIMA Quebec, in addition, projects must demonstrate a balanced participation of Quebec and foreign parties throughout their development; a financial contribution in cash totaling at least 20% of eligible expenses in Quebec is required from the Quebec tenant community and a contribution in cash or in-kind totaling at least 30% of the overall expenses of the ERA MIN 3 consortium project is required for all foreign project partners.
- The financial assistance from MEIE will take the form of a non-repayable and non-recurring contribution of up to 50% of the eligible expenses of the Quebec part, up to \$500,000 (management fees and FIR included) over three years per project. Other contributions must be demonstrated (official signed letters specifying the amounts granted for the realization of the project).

Duration of Projects

The duration of the project is from a minimum of 1 year to three years.

PRIORITY THEMES

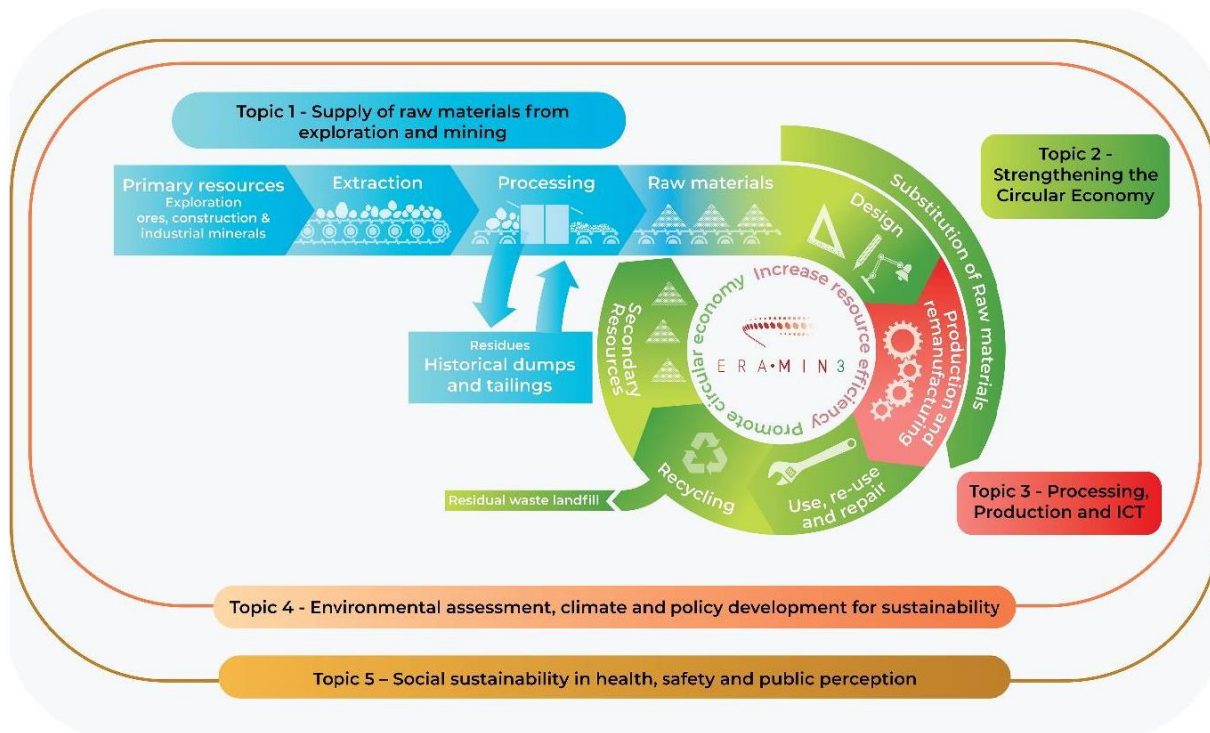
In keeping with its strategic plan, PRIMA Quebec recommends the submission of files dealing with the development of advanced materials applied to such key Quebec sectors as transportation and infrastructure, energy, the environment, electronics, health and chemistry.

Technologies targeted by this call for projects include primarily:

- **New materials:** Polymers, elastomers, biomaterials, metals, innovative fillers, cellulosic filaments, natural and synthetic fibers, nanomaterials, quantum material, etc.
- **Formulated materials or high-performance finished or semi-finished products:** Composites (TD or TP), rubbers, alloys, ceramics, smart textiles, flexible materials, membranes, thin layers, coatings, biocompatible materials, encapsulation, sensors, quantum technologies, etc.

- **Implementation processes, scaling and new characterization techniques:** Additive manufacturing and 3D printing, modification and surface treatment, micro/nanofabrication, tools, new characterization tools, modeling and simulation, shaping processes, quantum calculus, etc.
- **Use of artificial intelligence with advanced materials for production, integration or implementation processes or characterization technique.**

The scope of the joint call is needs-driven research on non-fuel, non-food raw materials (minerals and metals extracted from primary or secondary sources) addressing one or several areas of the raw materials sustainability scheme, as shown in the figure below. As an overarching objective, the proposed research should clearly demonstrate potential to promote the sustainable and responsible sourcing processing, production, consumption and recycling of primary and secondary raw materials in a circular economy, by taking into account also appropriate sustainability and non-technology aspects as environmental, social, health and circular economy issues.



Proposals should deliver convincing arguments on the potential impact of their innovation and research on the above-mentioned themes. They should take specific actions during the project to be able to quantify the expected impact using appropriate metrics and life cycle analysis thinking. A specific work package on the monitoring of these parameters should be considered in order to steer the project in the most advantageous direction for the environment.

The ERA-MIN 2023 joint call will focus on three segments of non-fuel and non-food raw materials:

- Metallic minerals
- Construction materials
- Industrial minerals

The call focuses on three steps (topics) within the raw materials value chain and life cycle, plus two non-technical topics on the overarching issues of environmental and social sustainability, respectively. The inclusion of the sustainability topics in projects addressing scientific and technological developments will be considered as a strong added value for each proposal. Moreover, proposals addressing more than one topic are expected to take into account a holistic view of the value chain in a clear circular economy approach.

Projects focusing on the following subjects are particularly encouraged:

- One, or more, of the 30 Critical Raw Materials listed in 2020 by the European Commission.
- R&I on primary supply of raw materials for EU strategic autonomy and successful transition to a climate-neutral and circular economy, such as better data on geological resources and mineral exploration, extraction and production, including by- and co-products.
- The inclusion and evaluation of Big Data and ICT-based tools, for example applied in robotics and automation, with the focus on closing product and material cycles, increasing the efficiency of raw materials supply (e.g., inventories, supply chain management, automation) and foster innovative business models, open innovation and digitalisation.
- Special attention will be paid to proposals evaluating environmental and societal impact of the raw materials industry (see topics 4 and 5 below). Non-technology issues will reflect the need for improvement of frameworks for the minerals industry: policy development, public acceptance, workflows, life-cycle analysis indicators and design of new business models. Therefore, applicants should describe how their project will engage with the public, taking into account environmental, social impact and health safety issues related to the different stages of the raw materials value chain.

In addition, eligible projects must be covered by themes of the ERA MIN 3 call for projects. (See the ERA MIN guide for the description of the themes)²:

- Topic 1. Supply of raw materials from exploration and mining
- Topic 2. Strengthening the circular economy.
- Topic 3. Processing, Production and ICT.
- Topic 4. Environmental assessment, climate and policy development for sustainability
- Topic 5: Social sustainability in health, safety and public perception

Please note that certain themes and sub-themes are not supported by all agencies, please consult the ERA-MIN 3 guide for more information.

PRIMA Quebec does not support the following themes: 2.6; 4; 5.1 and 5.3; 5.2 is supported if it involves advanced materials.

² <https://www.era-min.eu/joint-call/era-min-joint-call-2021>

FINANCIAL ARRANGEMENT

ELIGIBLE EXPENSES

Eligible expenses are those that involve the Quebec team's research activities and include project-related costs in Quebec. No additional financial assistance will be granted for any cost overrun regarding an approved project.

The expenses described below are eligible provided they are justifiable and directly attributable to the completion of the project.

The following expenses will be eligible if deemed reasonable, justifiable and directly attributable to the project:

- Salary expenditures for the R&D personnel hired to complete the project (by organization type):
 - **For universities and institutions in the health and social services network where research activities are conducted:** Salary expenditures for graduate students, research assistants, research professionals and technicians;
 - **For College Technology Transfer Centres (CTTCs), NPOs and public research institutions:** Salary expenditures paid out to researchers and R&D personnel hired to complete the project without any other financial support from the MEIE.
- Student scholarships;
- The purchase or leasing of project-related equipment³;
- Research-related consumables and supplies;
- Animal facilities and platform-related costs;
- Travel and living expenses for Quebec researchers and students (airfare, local transportation, accommodations, meal expenses and visa costs)⁴;
- Consulting fees and subcontracting costs;
- Management costs for the use of intellectual property;
- Knowledge dissemination costs;
- Costs related to the use of research and innovation results and intellectual property protection (publication costs, scientific and technological dissemination costs, workshop and seminar administration costs, international patent fees, etc.);
- Legal document translation and design costs for partnership consolidations (maximum \$10,000).

Specifications

Eligible project salaries are set according to the agreed-upon salary rates within each organization and **prorated to the involvement of the various employees**.

³ Expenses regarding small equipment purchases or equipment leasing will be limited to a maximum of 25% of all eligible expenses. The purchase value of each piece of equipment must be equal to or less than \$25,000 before taxes.

⁴ These costs must represent a maximum of 15% of the total eligible expenses. For the purpose of calculating the subsidy, only the amounts corresponding to the scales in effect at the Government of Quebec will be taken into account (see Appendix 1 of this guide for more details).

INDIRECT PROJECT COSTS

Additional operating expenses will be eligible for **universities, affiliated hospitals and CCTT** additional operating expenses are eligible. A maximum rate of **27% prorated to the MEIE contribution** will be applied to the following five eligible cost items included in the direct project-related costs:

- Salaries and fringe benefits;
- Student scholarships;
- Materials, consumables and supplies, including animal facility and platform-related fees;
- Equipment purchases or leasing;
- Travel and living expenses.

Indirect research fees (IRF) will be included in the MEIE's financial support. Every financial partner involved must match this contribution.

INELIGIBLE EXPENSES

Ineligible expenses will include, among others:

- Salaries for university professor-researchers, college professors and researchers from participating federal research centres;
- Salaries for administrative support staff;
- Travel expenses for the Quebec team's researchers and students attending events not directly related to the project;
- Accommodations, travel and living expenses for foreign researchers and students;
- Support expenditures for the programming of activities;
- Expenses for project planning activities, or any commercial, economic or technology transfer activity, including:
 - Detailed market research;
 - Detailed financial studies;
 - Technological demonstrations;
 - Product or process testing and validation;
 - Product certification;
 - Market expansion;
 - Marketing plans;
 - Promotional activities;
 - Regulatory issues beyond the scope of intellectual property management and use, etc.;
 - The sale of samples, products, equipment and technology;
 - Any building purchase, sale or construction;
 - Licensing;
 - Joint ventures, mergers, acquisitions, etc.
- Any expense not directly related to the project;
- The cost of establishing an on-line presence or web hosting;
- Support expenditures for the programming of activities;
- Grant funds already received from the following:
 - Canada Foundation for Innovation (CFI), excluding the Infrastructure Operating Fund (IOF);
 - Other MEIE financial assistance programs.

FINANCING PACKAGE

MEIE financial assistance will not exceed 50% of eligible cash expenses. PSO-International will accept a public co-financing for eligible cash expenses from multiple sources (please contact a PRIMA advisor to ensure the eligibility of additional funding), including but not limited to:

- The applicant organization;
- Institutions in the health and social services and education networks;
- Federal departments and agencies, including federal granting councils.
- Provincial and municipal departments and agencies, along with Quebec research funds.
- Crown corporations.

Financial assistance under the PSO will not be combined with contributions from any other MEIE program, including MITACS grants, which will not be accepted as co-funding for the financing package.

Co-funding sources must be included in the financing package; a copy of the additional funding request must be provided upon submission. **Confirmation that the additional funding has been obtained must be sent to PRIMA before April 1, 2024.**

Combined assistance from municipal, provincial and federal governments, as well as from partners with intervention funds financed by these levels of government, will not exceed **80%** of all project-related expenses. The assistance considered in this calculation will involve project-related grants, loans and tax incentives.

Companies must provide a minimum **cash** contribution equal to **20%** of eligible expenses.

PROJECT MANAGEMENT COSTS

It is the responsibility of the funding applicant to inform industrial partners of PRIMA Quebec's management fees. Industrialists involved in the project must contribute to PRIMA Quebec's management fees for a total amount of 3% of the amount of the research mandate, up to a maximum of \$30,000. MEIE management fees are 2% for a maximum of \$20,000.

FINANCIAL ASSISTANCE TERMS AND CONDITIONS

Form and Amount

The financial assistance will be provided over a three-year period and represents a non-repayable, non-recurring financial contribution. It may reach 50% of eligible cash expenses related to the performance of activities in the Quebec portion, but it will **not exceed \$500,000 over three years**. It may reach 50% of eligible expenses, up to a maximum of \$500,000 per research and development project under the ERA MIN call. The \$500,000 amount will include the MEIE management fees (2%), as well as indirect research costs, if applicable. The MEIE financial contribution will be non-repayable and non-recurring.

COMMUNICATION

Please note that the information provided in the identification sheet section as well as the amount of the grant are public data and may be used by the MEIE and PRIMA Quebec for promotional purposes.

If your project is approved for funding, the ministry may reserve the right to a first communication. Please communicate with PRIMA before any first communication on the project.

PROJECT SELECTION

Following a call for proposals, projects will be submitted and evaluated by competent PRIMA Quebec and ERA MIN 3 network committees.

Representatives from the MEIE will act as observers during the regional selection committee meeting.

PRIMA Quebec will issue funding recommendations for a list of projects prioritized by its Board of Directors.

The Board of Directors will approve the list and indicate the cut-off threshold. It will then issue recommendations that include, among other points, the title of each approved project, along with the relevant financial commitment.

PROJECT APPROVAL

Funding recommendations and assessment reports will be forwarded to the MINISTER, in accordance with the agreement. The MINISTER may then approve projects and award co-funding according to the established parameters or refuse the co-funding of certain projects while specifying the problematic components that led to the refusal.

Project funding approvals will be confirmed through an award letter that specifies the terms and conditions surrounding accountability.

PROJECT TRACKING

When submitting the annual activity report, a project progress report (scientific and financial) containing up-to-date data for each of the active projects must be submitted.

CONTACT

For more information or assistance in writing the application file, do not hesitate to contact an advisor:

- Michel Lefèvre: 514 284-0211, ext. 227, michel.lefevre@prima.ca
- Sébastien Garbarino: 514 284-0211, ext. 226, sebastien.garbarino@prima.ca
- Stéphane Ruggeri : 514 284-0211, ext. 231, stephane.ruggeri@prima.ca
- Cloé Bouchard-Aubin: 514 284-0211, ext. 225, cloe.bouchard-aubin@prima.ca

Applications must be sent as a single file in PDF (Adobe Acrobat) format by email to: laura.salatian@prima.ca, 514 284-0211, ext. 223.

CALL FOR PROJECTS CALENDAR

Dates	Step
December 7, 2022	Pre-announcement call
January 16, 2023	Webinar PRIMA - ERA.MIN Register: https://us06web.zoom.us/webinar/register/WN_nBOg1zH7Q0GVv437dB39zg
January 24, 2023	Webinar - Meet your future partners, France, Canada and Belgium
Mars 30, 2023	Deadline for submission of full proposals
October 17, 2023	Communication of the selection of full proposals recommended for funding
April 1, 2024	Last start date of selected projects

APPENDIX 1- DETAILS ON ELIGIBLE TRAVEL EXPENSES

TRAVEL EXPENSES IN QUEBEC

Travel expenses refer to costs incurred by a person travelling outside of his or her usual work territory.

This appendix will cover travel expenses regarding certain modes of transportation, hotel accommodations and restaurant expenses. Other travel expenses, or reimbursements in excess of those established, may be authorized if necessary, but only when documented. Barring exceptional circumstances, the methods chosen must demonstrate due regard for cost saving.

The BENEFICIARY must comply with the “Directive sur les frais remboursables lors d'un déplacement et autres frais inhérents”, available on the *Conseil du trésor* website at the following address: <http://www.tresor.gouv.qc.ca/publications/secretariat/>.

On the agreement signature date, these guidelines prescribed the following rates:

Transportation

More economical forms of public transportation must be prioritized over personal vehicles.

With regard to personal vehicles, the following rates will be eligible according to the applicable kilometrage during the BENEFICIARY's fiscal year:

Annual Kilometrage	Rates
1 st instalment: 1 to 8,000 km	\$0.59/km
2 nd instalment: More than 8,000 km	\$0.53/km

If the appropriate public transportation is available but the BENEFICIARY opts for a personal vehicle, the eligible rate will be reduced to \$0.148 per kilometre travelled.

Hotel Accommodations

The following maximum daily allowance for hotel accommodations will apply:

City	Maximum Allowance	
	Low Season ⁵	High Season ⁶
City of Montreal territory	\$126	\$138
Quebec City territory	\$106	
The cities of Laval, Gatineau, Longueuil, Lac-Beauport and Lac-Delage	\$102	\$110
Establishments located elsewhere in Quebec	\$83	\$87
All other establishments	\$79	

These rates are based on the *Secrétariat du Conseil du trésor* guidelines and may vary.

These maximum amounts do not include the Goods and Services Tax (GST), the Quebec Sales Tax (QST), or the accommodation tax, which will be reimbursed where applicable.

Restaurant Expenses

The following maximum daily allowance for restaurant expenses will be applied:

	Applicable Rate
Breakfast	\$10.40
Lunch	\$14.30
Dinner	\$21.55
Total	\$46.25

These rates are based on the *Secrétariat du Conseil du trésor* guidelines and may vary.

The rates shown above including taxes and service.

⁵ From November 1 to May 31

⁶ From June 1 to October 31

TRAVEL EXPENSES OUTSIDE QUEBEC

This section covers expenses incurred outside Quebec for programs that include these costs.

City/Country	Maximum Allowance	
	Accommodations Per Day In CAD	Meals Per Day In CAD
CANADA (OUTSIDE QUEBEC)		
Calgary	\$166	\$50
Charlottetown	\$148	\$50
Edmonton	\$115	\$50
Halifax	\$136	\$50
Moncton	\$148	\$50
Ottawa	\$148	\$50
Regina	\$108	\$50
Saskatoon	\$102	\$50
St. John's (Newfoundland and Labrador)	\$159	\$50
Toronto	\$184	\$60
Vancouver	\$184	\$55
Victoria	\$184	\$50
Winnipeg	\$102	\$50
Other cities	\$102	\$50
AMERICA		
	In USD	In USD
Atlanta	\$120	\$50
Boston	\$192	\$50
Chicago	\$130	\$50
Dallas	\$120	\$50
Detroit	\$120	\$50
Los Angeles	\$120	\$50
Miami	\$120	\$50
New York	\$192	\$60
Philadelphia	\$120	\$50
San Francisco	\$160	\$50
Seattle	\$120	\$50
Washington, D.C.	\$120	\$50
Other cities	\$120	\$50
Brazil	\$123	\$40
Mexico	\$177	\$43
EUROPE		
	Local currency	Local currency
Germany	€137	€60
Belgium	€137	€54
Spain	€161	€59
France	€174	€62
Italy	€218	€52
Luxembourg	€125	€52
Netherlands	€111	€61
United Kingdom	£139	£51
Switzerland	209 Francs	92 Francs

City/Country	Maximum Allowances	
	Accommodation Per Day	Meals Per Day
SCANDINAVIAN COUNTRIES	In USD	In USD
Denmark	\$105	\$65
Iceland	\$153	\$69
Norway	\$114	\$78
Sweden	\$127	\$55
Finland	Local currency €125	Local currency €71
NEAR EAST		
	In USD	
Israel	\$219	\$80
ASIA	In USD	In USD
China	\$145	\$48
South Korea	\$159	\$57
India	\$190	\$38
Japan	\$164	\$89

These rates are based on the *Secrétariat du Conseil du trésor* guidelines and may vary.

These maximum amounts do not include the Goods and Services Tax (GST), the Quebec Sales Tax (QST), the accommodation tax, or any other tax in effect within the relevant countries, which will be reimbursed where applicable.

Stated amounts are based on the US dollar, notwithstanding Canada and countries that use the Euro. Local currencies are used for information purposes only.

Please contact us for any other destination.

Support documents, including receipts and proof of payment, will be required and must be kept by the applicant for possible auditing purposes.

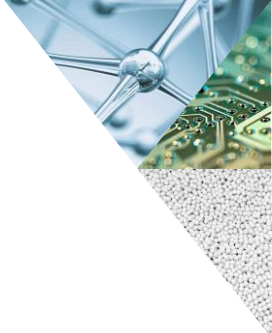
APPENDIX 2 - HYDRO-QUÉBEC

Hydro-Québec is considered by default to be a public research center.

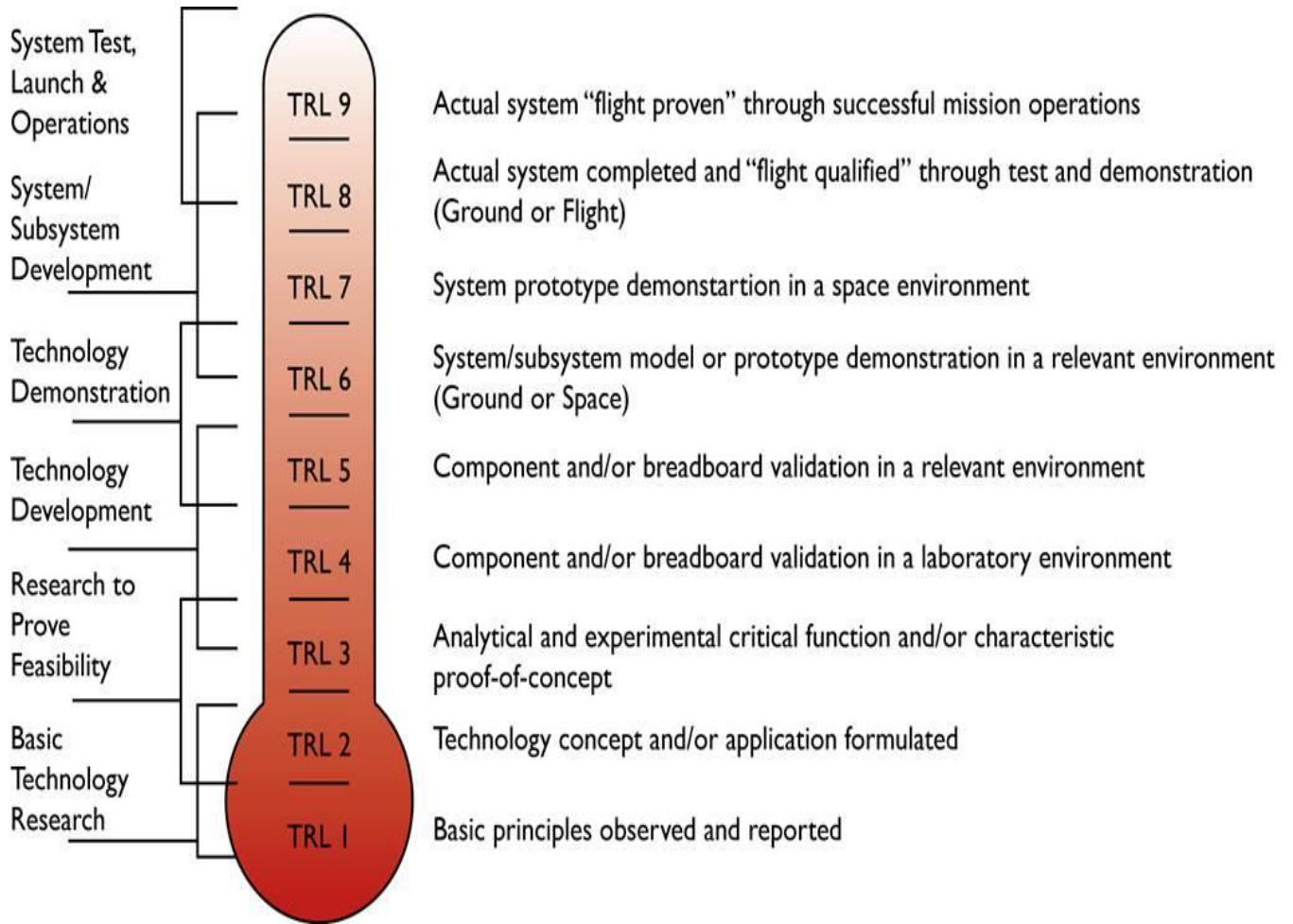
However, Hydro-Québec plays an extremely structuring role in the innovation ecosystem in electricity production and distribution, a sector where it is a major client in a context of monopoly. Because of this unique situation, the MEIE authorizes Hydro-Québec to be considered as an industrial partner in research projects in partnership with InnovÉE, PRIMA and PROMPT if the following criteria are met:

1. Themes:
 - Field of production, transport and distribution of electricity.
2. Partnership:
 - At least one Quebec company other than Hydro-Quebec must be involved in the project.
 - The Quebec company must derive significant benefits from the partnership, notably an equitable sharing of the IP.
3. Structuring and strategic nature of the projects:
 - To be eligible, projects involving Hydro-Québec must be “structuring” and aim at “solving problems of a strategic nature for Quebec”. In this sense, projects whose spin-offs will allow above all the continuous improvement of Hydro-Québec operations are not eligible.

These project eligibility criteria must be analyzed by the evaluation committee and appear in the report submitted to MEIE.



APPENDIX 3 - DEFINITION OF DIFFERENT TECHNOLOGY READINESS LEVELS (TRL)



Graphic inspired by the document: Space Systems - Definition of Technology Readiness Levels (TRL) and their criteria of assessment, ISO 16,290.

The ISO16290 standard is available for consultation at the offices of PRIMA Quebec.